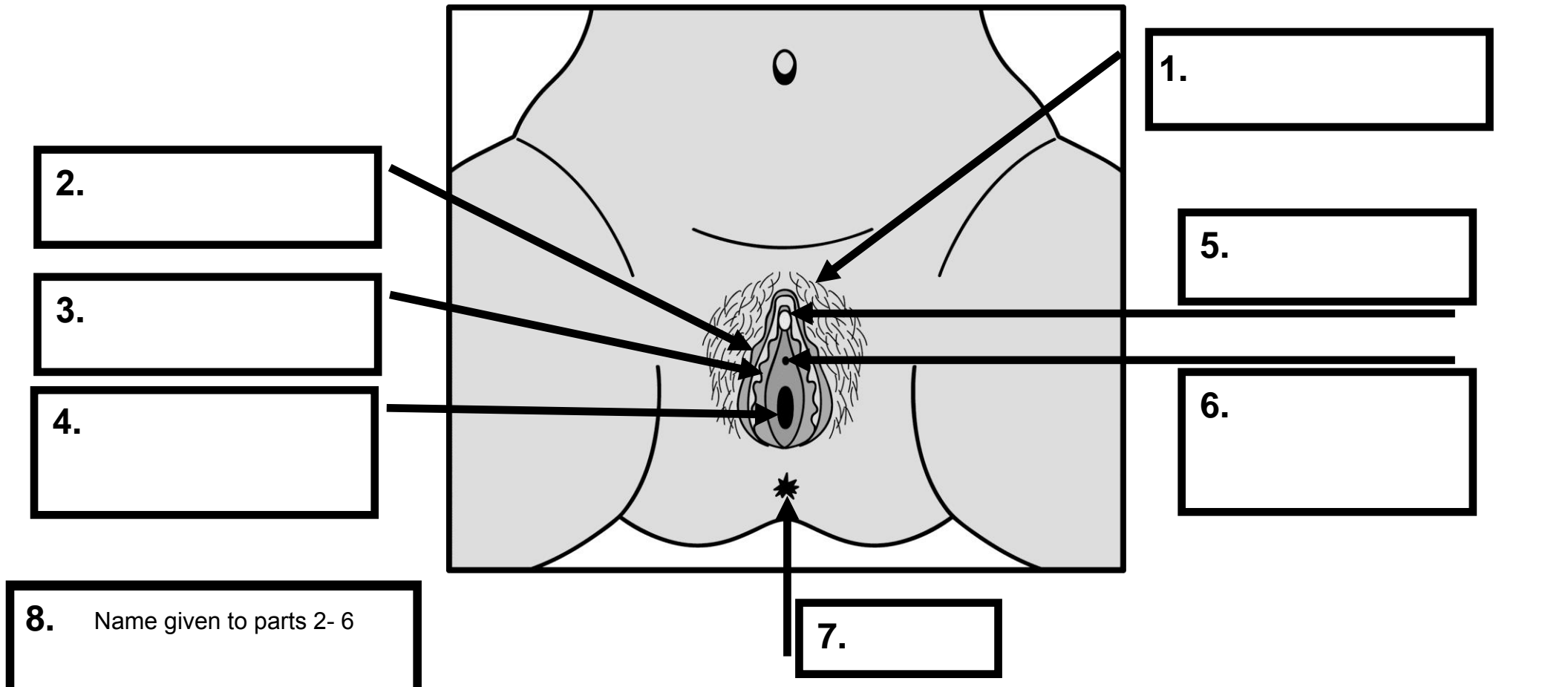


Labelling female external body parts

Can you correctly label the following diagram, using the words in the box below?



1.

2.

3.

4.

5.

6.

7.

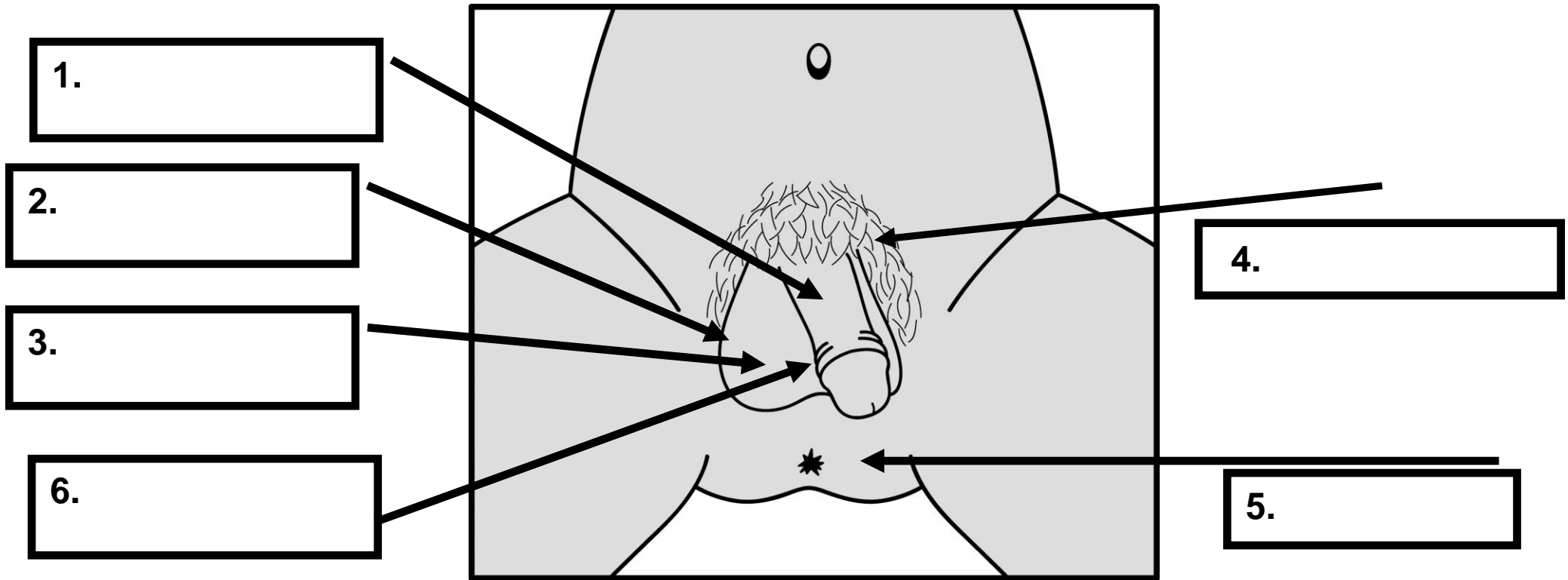
8. Name given to parts 2- 6

*** Pubic Hair *Outer Lips *Vaginal Opening * Vulva * Clitoris *
Urinary opening * Anus * Inner Lips**

Activity sheet (b)

Labelling male external body parts

Can you correctly label the following diagram, using the words in the box below?



*** Pubic hair * Foreskin * Anus * Penis * Testicle * Scrotum**