

Working with parents

We look forward to welcoming parents into school to help in many ways.

If you would like to offer to help regularly, please see your child's teacher.

All regular volunteers in school must complete a check with the Disclosure and Barring Service as part of our policy to safeguard children. The school office will organize a form for you.

Some activities such as swimming in the summer term, need lots of helpers.



Parents' evenings are held in the Autumn and Spring terms for every child. The infant cloakroom door is locked for security on that night. Please go through the hall to classes 1 and 2.

Please refer to the School Prospectus or website for our uniform requirements. Uniform is ordered through the www.oakappledirect.co.uk website.

Children come straight into class from 8.45am. No child should be left unsupervised on the school grounds before this time.



Dogs are not allowed on site. They can be tied to the field gate by the side entrance to the Village Hall.

St Mary's CEVC Primary School Bradford Abbas

Mill Lane
Bradford Abbas
Sherborne
Dorset DT9 6RH

Phone: 01935 476515
Fax: 01935 476515

E-mail: office@bradfordabbas.dorset.sch.uk
Website: www.bradfordabbasprimary.co.uk

St Mary's CEVC Primary School, Bradford Abbas



Top Tips for New Parents



Welcome to our school

Top Tips

The tips presented in this leaflet have been suggested by parents who have joined us in Reception or at other times in their child's school career and are all the things they wish we had told them!

We hope this information will make it even easier for you and your child to settle in.

If, after joining us, you have any suggestions of your own for the next leaflet, please jot them down and drop them in to the office.

Thank you.



Parents and children celebrated the Royal Wedding with us

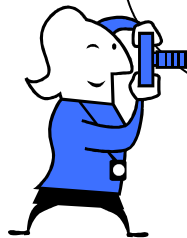


PE kit stays in school during term time and is sent home to be washed at half term holidays. At Key Stage 2 (7-11 years), games kit may need washing more often.

PTA discos are for children attending the school only—the 'family' ticket does not apply to pre-schoolers.



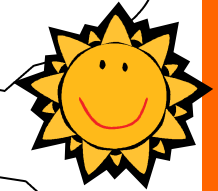
The school photographer visits every year in the summer term. One year, class photos are taken, the next, individual/family photos. 'Family' now applies to pre-school children as well.



Class 1 and 2—walk your child down to the cloakroom and see them into the classroom. Try to settle them quickly and leave so the class can start their busy day. At KS2, encourage your child to sort themselves out!



Wash sweatshirts inside out before wearing to avoid fluffy shirts. Iron on reverse or it will go shiny.



Put suncream on your child in the morning. Send it in a bag if he or she can apply it on their own or send a T shirt to wear in the pool on hot sunny days instead. Please send a named sunhat to school in the Summer.

Children can go home with parents after end of term services (pm only) even if it isn't 3.30pm. Check times and let staff know who is collecting your child.



Check book bags and the blackboards outside KS1 and KS2 exits for up to date info (or ask whoever picks up your child to check with their teacher).